

Contents

Introduction

SYSTEM REQUIREMENTS

Installation

Windows 95, Windows 98, Windows NT 4.0

Screen Saver Series

Setting up a screen saver

Installation of each saver

Settings

Wallpaper, Security, Display

Changing savers

BONUS PROGRAMS

Separate manuals

Yet more bonuses

FREE SCREEN SAVER OF THE MONTH CLUB

SUPPORT

Our proud tradition of support

Voice

E-Mail

Fax

Internet

Acknowledgments

Special Thanks

SYSTEM REQUIREMENTS

Operating System

Disk Space

Hardware

Operating System

Your computer must have Microsoft Windows 95, Windows 98, Microsoft Windows NT 4.0, or higher versions of these operating systems.

Disk Space

The amount of disk space required varies with the number of screen savers you wish to install.

Hardware



A mouse or pointing device is required.



To access our web site you must have a modem and a connection to the Internet.

Windows 95, Windows 98, Windows NT 4.0

1. Place the CD into your CD-ROM drive.
2. In the start-up screen click on START, then click on RUN.
3. Type in D:\CDSETUP and press Enter. (If your CD-ROM drive is not D, then change it to the letter associated with your CD-ROM drive.)
4. Follow any instructions that appear on the screen.

Screen Saver Series

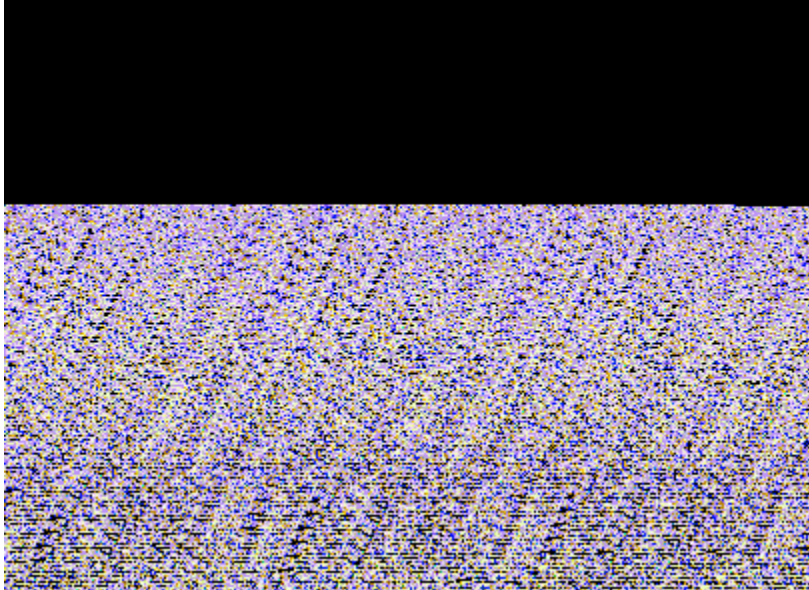
Ranging from Baby Animals to Night Lights, the Screen Saver series provides a complete collection for all interests.

Installation of each saver

Each screen saver is provided in a "package" file. **A screen saver must be installed in Windows before it can be used.** This is only required to be done *once for each individual screen saver*. This is a requirement of Windows.

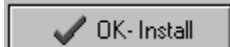
Each screen saver provides an automated setup for each screen saver.

To select a screen saver to install, run the SAVER program. A shortcut for this program is created when you install the program:



Main menu (your display may be different, but the concepts are the same)

To install a screen saver, click on the saver of your choice, and then click on the install button:



You will then be able to install the screen saver and make it available for your use.

You will see the program installed.

See

[Other options](#)

Other options

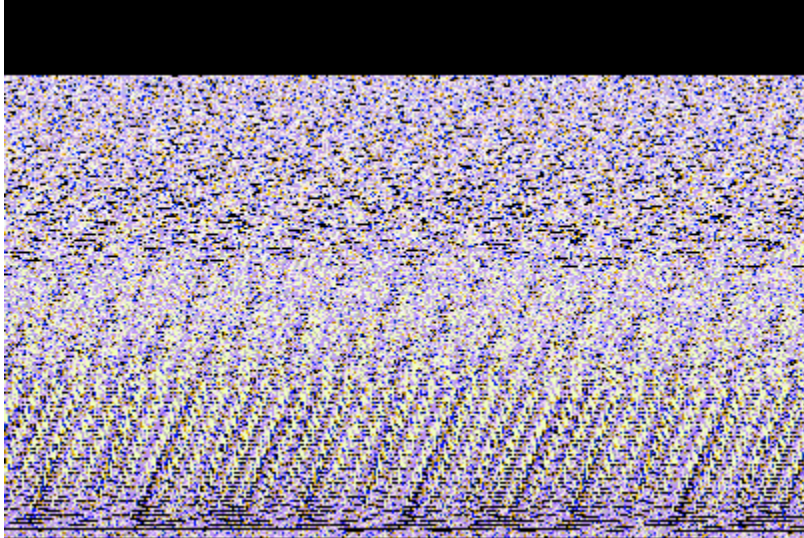
The HELP button activates help (this file)

The ABOUT button show copyright and version information

The CLOSE button ends the program and returns to Windows.

Wallpaper, Security, Display

After the screen saver is installed, you will then see the following display:



Screen Saver after install (your display may be different)

See

[Preview](#)

[Settings](#)

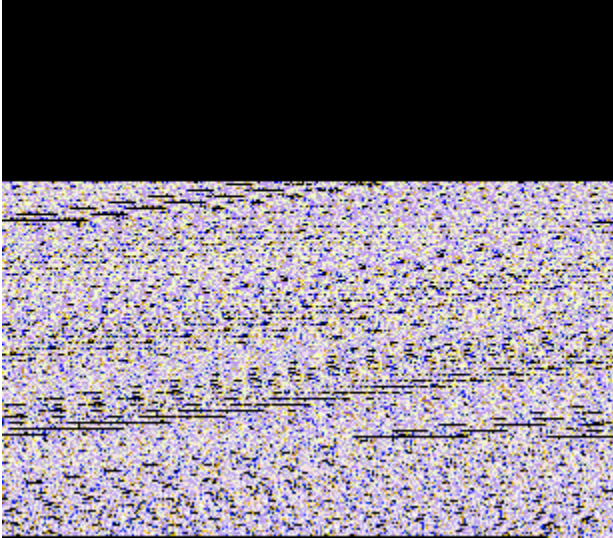
[Effects page](#)

Preview

The preview choice shows you the screen saver without needing to wait for the system to be idle.

Settings

This is the most important button. You will see the following "tabbed notebook:"



Settings

See

[Screen Saver page](#)

[Wallpaper page](#)

Screen Saver page

If you select USE AS DEFAULT SCREEN SAVER, the saver currently on the screen will become the saver activated when you are idle. You may select when the saver starts, and how long each image will be shown.

The other advanced settings on the Screen Saver page include:

Enlarge pictures to Best fit (recommended)

Tile pictures (not recommended)

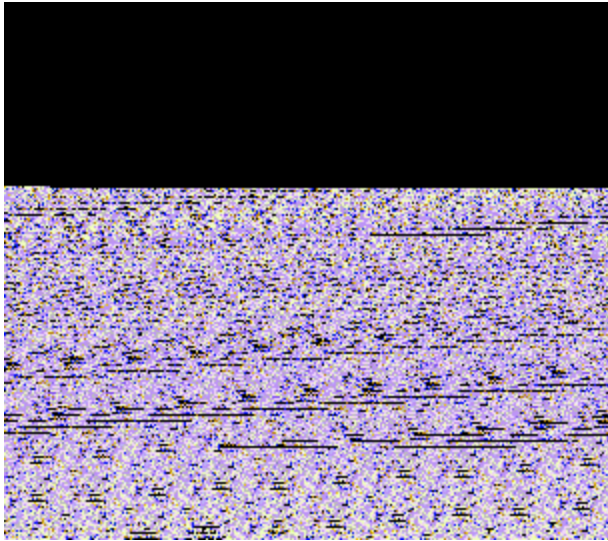
Use random image order (matter of personal taste)

Show Picture tiles (strongly recommended)

Display pictures in black and white (strongly recommended)

Use sound effects (matter of personal taste)

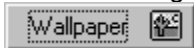
Wallpaper page



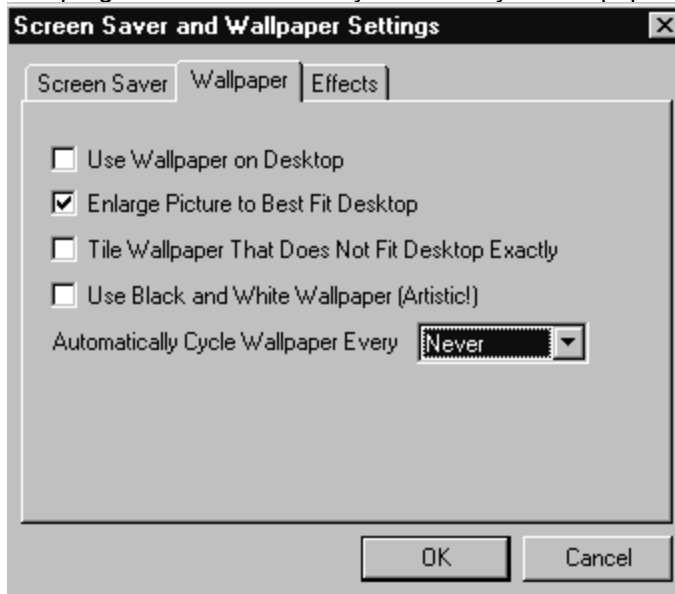
Wallpaper

Wallpaper are the images displayed on your desktop. You may switch between several different wallpaper tiles.

To use an image as wallpaper, highlight the image and then click on the Wallpaper button:



The program will automatically make this your wallpaper.



The other advanced settings on the Wallpaper page include:

Use Wallpaper on Desktop (matter of personal taste)

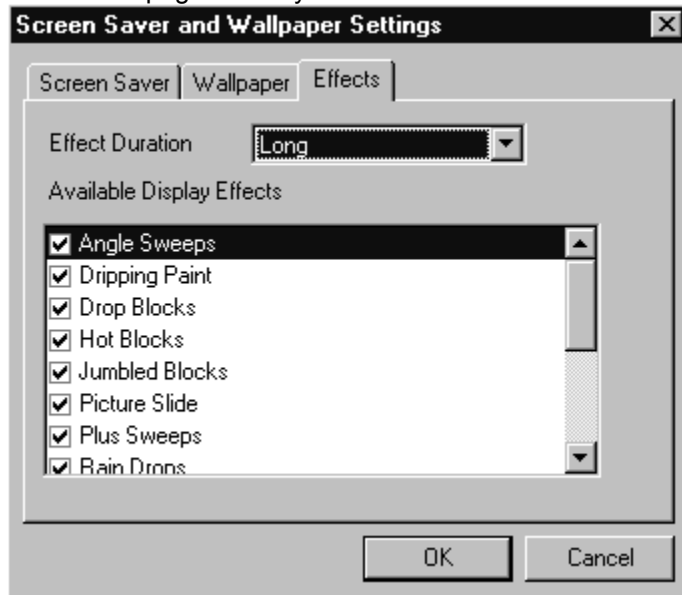
Tile Wallpaper (not recommended)

Display pictures in black and white (matter of personal taste)

Automatically cycle (matter of personal taste)

Effects page

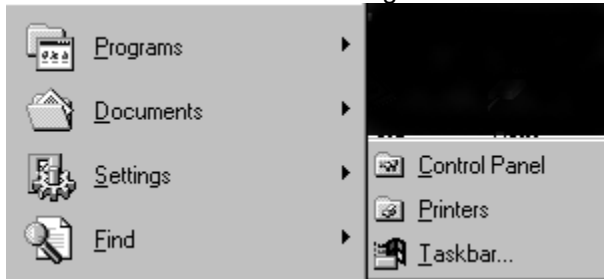
The effects page allows you to select which effects will be used between images.



Select these as you see fit.

Changing savers

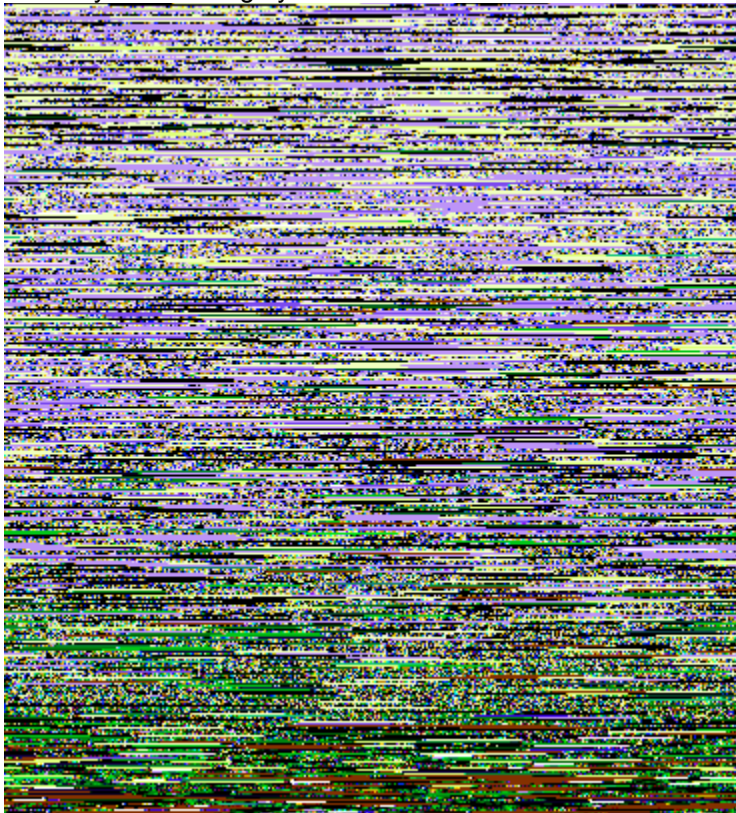
After you have installed a screen saver ONCE, you may select it or change to no saver, or to any other screen saver. This is done through the Windows Control Panel:



To reach the control panel, rest your cursor on Settings and then Control Panel. Then select DISPLAY:



You may then manage your screen savers from the tab:



The settings that you used when you installed a saver are recognized by Windows. You may change the settings as you see fit.

For more information on the settings, please consult Windows help.

Separate manuals

Separate manuals are provided for the bonus programs. The bonus programs also have on line help.

Yet more bonuses

Visit us on the web at: www.cosmi.com for additional freebies.

FREE SCREEN SAVER OF THE MONTH CLUB

Congratulations! As the owner of this screen saver, you're automatically a member of the Swift Screen Saver of the Month Club! When you register your program at:

www.cosmi.com

we'll activate you as a member. You will be able to go to our web site on the last day of each month and get a new free screensaver. Membership is FREE. You will need this password to enter the download area for the Screen Saver of the Month Club:

Ferrari

The download page for the free screensavers is at the club house:

www.cosmi.com/club/saverclub.htm

We hope to see you every month in the club house!

SUPPORT

Our proud tradition of support

We encourage all of our users to provide comments and suggestions about this program. This program is supported by voice, fax and Internet e-mail.

Voice

For telephone support, call COSMI's Customer Service at (310) 886-3510 during the hours below.
(Note: All times are in the Pacific Standard Time zone.)

Monday through Thursday, 8:30 a.m. - 12:00 noon and 1:00 p.m. - 4:00 p.m.

Friday, 8:30 a.m. – 12:00 noon.

Ö COSMI is very proud to be one of the few remaining software publishers to provide no charge customer support!

E-Mail

Support questions may be addressed to: support@cosmi.com.

Fax

You may fax us at (310) 886-3517.

Internet

Be sure to visit COSMI's Internet Web site: <http://www.cosmi.com>.

Special Thanks

Team COSMI, the only fully integrated software developer and publisher in the budget software industry, wishes to give special thanks to Team COSMI members who made special contributions to this program:

Programming: Amy Seeberger, Herb Kraft, Bryan Snofsky, Cesar Garcia, Emerald Burke, Georgia Schubert, Shawna Talbot

Sales: Randy Jick

Packaging: Susan Randle and David Serrano

Testing/In house Programming: Carol Dunn

